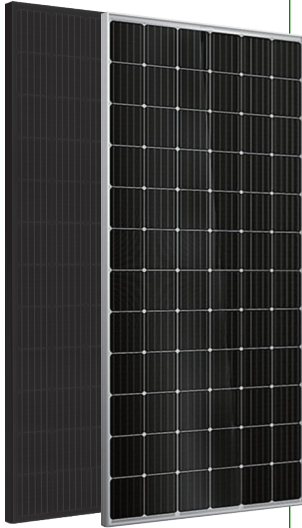


MONO

72 cells



V158 series, monofacial module



Features



High PID resistant

Advanced cell technology and qualified materials lead to high resistance to PID



High module efficiency

Advanced module technology delivers superior module efficiency



Current sorting process

System output maximized by reducing mismatch losses up to 2% with modules sorted & packaged by amperage



Positive tolerance

Positive tolerance of up to 5W delivers higher output reliability



Extended wind and snow load tests

Module certified to withstand extreme wind (3800 Pascal) and snow loads (5400 Pascal) *



High system voltage Compatible

Maximum 1500VDC system voltage saves total system cost

Certifications and standards: IEC 61215, IEC 61730, conformity to CE



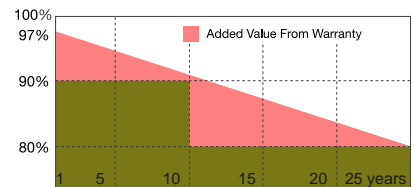
Chinayard Co.,LTD designs, manufactures and delivers high efficient solar modules to the world.

Founded in 2009, Chinayard is well known for its advanced technology, reliable product quality, and excellent customer service.

As one of leading PV enterprises, Chinayard has delivered more than 2.0G of solar products to residential, commercial, utility and off-grid projects all around the world.

Superior Warranty

- 12-year product warranty
- 25-year linear power output warranty



Chinayard distributor



Chinayard Co.,LTD

Version: CYC_V201911_EN

All information and data are subject to change without notice.

Email:chinayardliu@126.com

www.chinayard.com

Electrical characteristics at Standard Test Conditions(STC)

Model	CYC-V158-				
	MF72-390M	MF72-395M	MF72-400M	MF72-410M	MF72-415M
Maximum Power(Pm)	390Wp	395Wp	400Wp	410Wp	415Wp
Cell type	Mono	Mono	Mono	Mono	Mono
Optimum Operating Current(Imp)	9.82A	9.40A	9.68A	9.82A	9.88A
Short Circuit Current (Isc)	10.2A	9.87A	10.2A	10.43A	10.52A
Optimum Operating Voltage(V)	39.70V	42.01V	41.32V	41.71V	41.98V
Open Circuit Voltage(Voc)	48.04V	50.83V	50.00V	50.47V	50.80V
Maximum System Voltage	1500V				
Module efficiency	19.67%	19.92%	20.17%	20.68%	20.93%

Standard Test Conditions (STC): Irradiance 1,000 W/m²; AM 1.5; module temperature 25°C.
 Measuring uncertainty of power: ±3%. Certified in accordance with IEC 61215, IEC 61730-1/2 and UL 1703.

Temperature Characteristics

Nominal Operating Cell Temperature(NOCT)	45±2°C
Temperature Coefficient of Pmax	-0.42%/°C
Temperature Coefficient of Voc	-0.32%/°C
Temperature Coefficient of ISC	+0.05%/°C

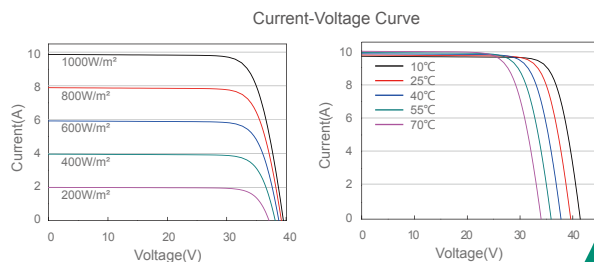
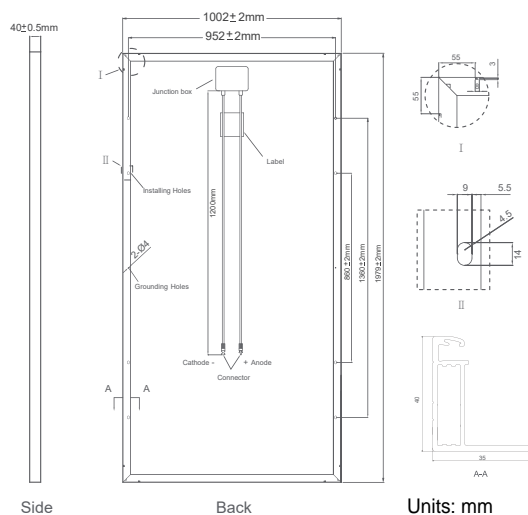
Material Characteristics

Dimension	1979*1002*40mm
Weight	Appro 22.6kgs
Frame	Anodized aluminum alloy
Front Glass	low-iron tempered glass ,3.2mm
Cell Encapsulation	EVA (Ethylene-Vinyl-Acetate)
Back Sheet	Composite film
Cells (quantity/material)	72 pieces solar cells series strings
Junction Box	IP67
Cable&Connector	Length 1200 mm, 2x4 mm ² , compatible film

Packaging

Container 20'	
Container 40'	
Container 40'HC	594 pieces

Dimensions and Structure



Chinayard distributor



eISOL

Chinayard Co.,LTD